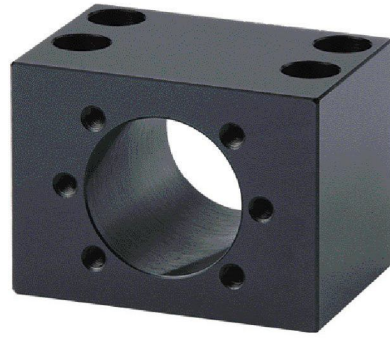
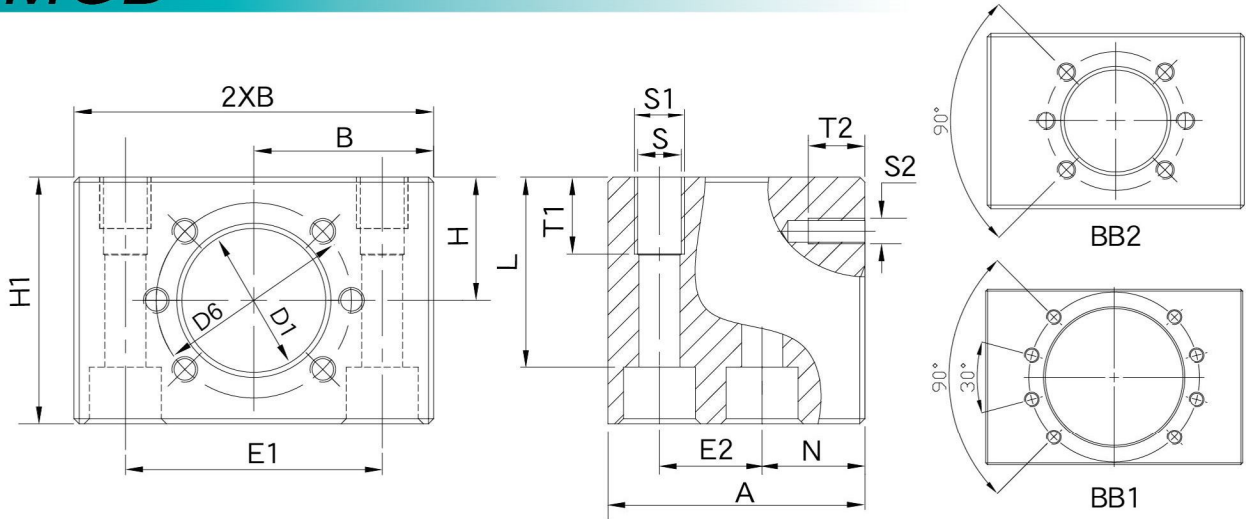


Nut Bracket MGD



MGD



Unit : mm

Model No.	Size	$d_0 \times P$	Part number	$D1 \pm 0.1$	$D6$	A	$B \pm 0.1$	$H \pm 0.1$	H1	E1	E2	N	S	S1	T1	S2	T2	ISO4762	L	Weight (Kgs)																				
MGD 16L	16x5	16x10	1506-0-0050	28.4	38	36	28	20	39	46±0.1	20±0.1	8	-	M6	12	M5	10	BB2	-	-	0.45																			
MGD 16	16x16	50																	35	24	48	50±0.1	20	8.4	M10	15	M8	37	0.99											
MGD 20L	20x5	20x20	1506-1-0050	36.4	47	55	37.5	23	48	55±0.1	23±0.1	22	-	M8	14	M6	11	BB2	-	-	1.12																			
MGD 20																			28	54	22	8.4	M10	15	M8	45	1.21													
MGD 25	25x5	25x10	1506-2-0050	40.4	51	55	40	30	58	60±0.1	23±0.1	22	8.4	M10	15	M6	11	BB2	M8	49	1.35																			
	25x25																																							
MGD 32S	32x5	32x10	1506-3-0050	50.4	65	70	45	35	68	70±0.1	45±0.1	12.5	-	M12	20	M8	14	BB2	-	-	2.23																			
MGD 32	32x20	32x32																	50		75±0.1	30±0.1	27	13	M16			M12	52	2.27										
MGD 40	40x5	40x10	1506-4-0050	63.4	78	80	60	42	84	90±0.1	35±0.1	31	15	M18	25	M8	17	BB1	M14	66	3.8																			
	40x12	40x16																																						
	40x20	40x20																																						
	40x40	40x40																																						

Application table of MGD Nut bracket for ballscrew manufacturer.

Model No.	Ballscrew manufacturer				
	STAR	HIWIN	PMI	COMTOP	GTEN
MGD 16	1502,1512-0-****	FSI-16-05	FSIN-16-05	SFU 1605	FSU 1605
MGD 20	1502,1512-1-****	FSI-20-05	FSIN-20-05	SFU 2005	FSU 2005
MGD 25	1502,1512-2-****	FSI-25-05	FSIN-25-05	SFU 2505	FSU 2505
		FSI-25-10	FSIN-25-10	SFU 2510	FSU 2510
MGD 32	1502,1512-3-****	FSI-32-05	FSIN-32-05	SFU 3205	FSU 3205
		FSI-32-10	FSIN-32-10	SFU 3210	FSU 3210
MGD 40	1502,1512-4-****	FSI-40-05	FSIN-40-05	SFU 4005	FSU 4005
		FSI-40-10	FSIN-40-10	SFU 4010	FSU 4010